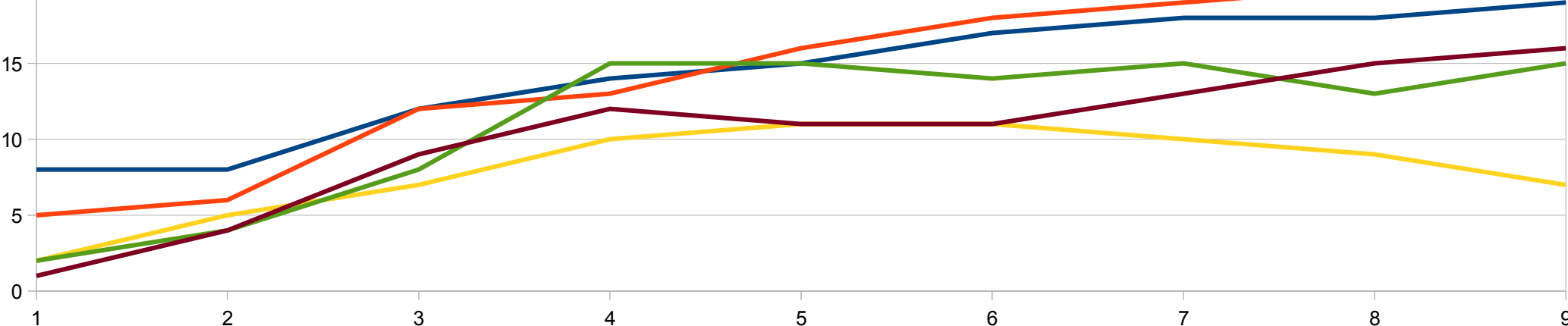


# HOW TO DESCRIBE A



# LINE GRAPH

# FOR IELTS



# 5 ACTIONS TO INCREASE YOUR CHANCES OF PASSING THE IELTS EXAM

**1. Sign up for free weekly tutorials and awesome practical guides.**



# 5 ACTIONS TO INCREASE YOUR CHANCES OF PASSING THE IELTS EXAM

**2. FILL Your phone up with FREE IELTS MP3s.**



# 5 ACTIONS TO INCREASE YOUR CHANCES OF PASSING THE IELTS EXAM

**3. Subscribe to the Youtube Channel.**



# **5 ACTIONS TO INCREASE YOUR CHANCES OF PASSING THE IELTS EXAM**

**4. Subscribe to IELTS Podcast on Itunes.**



**5. Ask for help if you have a problem:  
[ieltspodcast-at-gmail.com](mailto:ieltspodcast-at-gmail.com)**

# PART 1: HOW TO DESCRIBE A LINE GRAPH

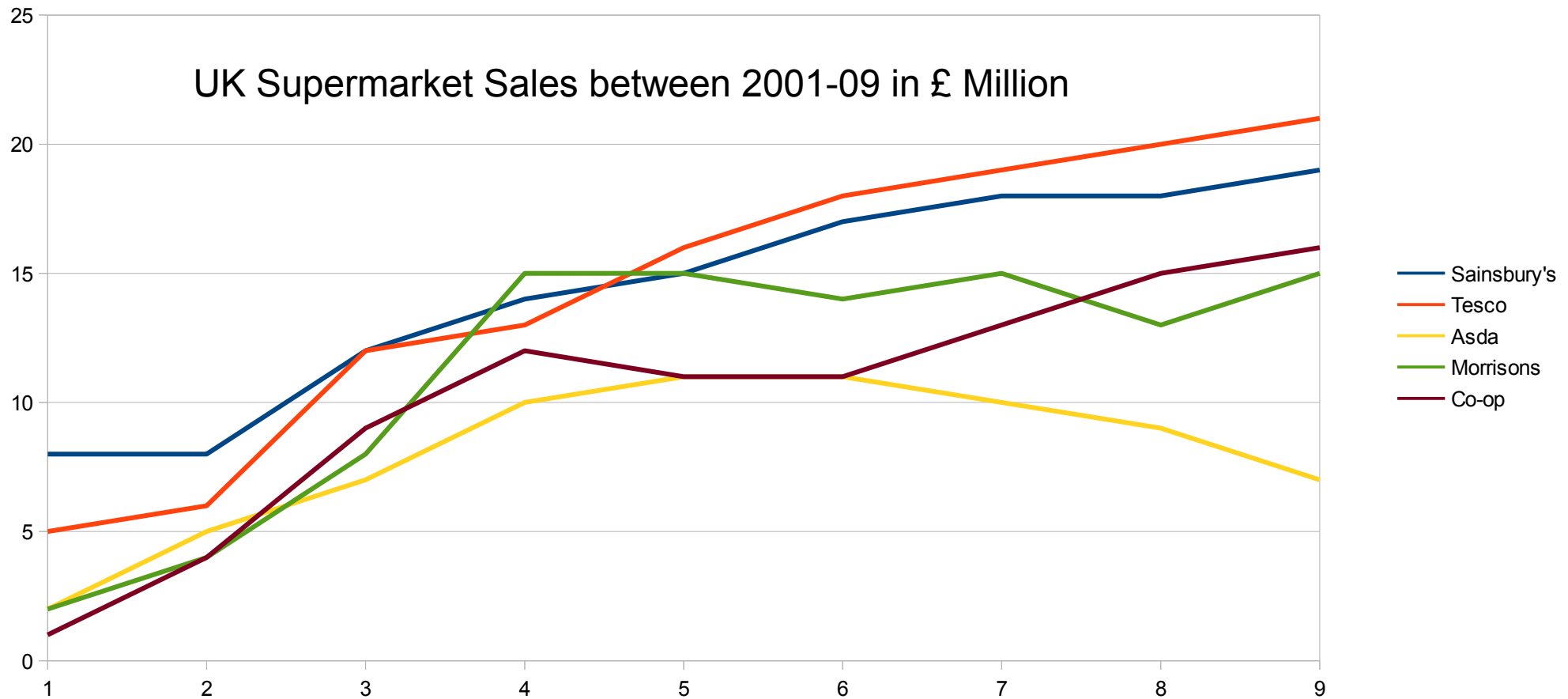
- How to write a description of a line graph on exam day.
- Group the information, choose the content.
- Introduction
- Summary
- 5 Tips

# PART 2: WHAT YOU NEED TO DESCRIBE A LINE GRAPH

- Active – Passive
- Adverbs
- Verbs
- Nouns
- Phrases for the introduction.
- Phrases for summaries.
- Phrases for change.

# 1. GROUP THE INFORMATION

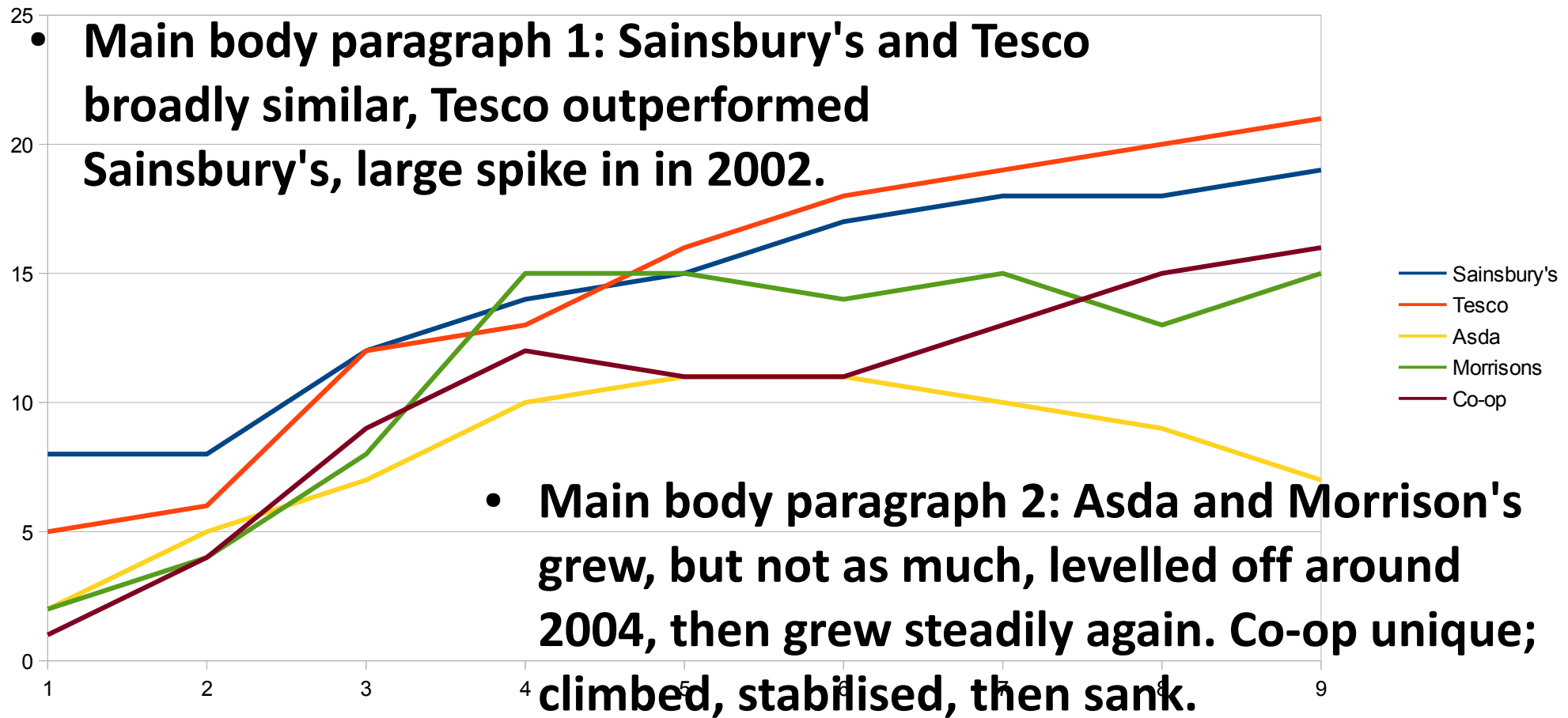
- Decide what will be in each paragraph





# 1. GROUP THE INFORMATION

- Decide what will be in each paragraph



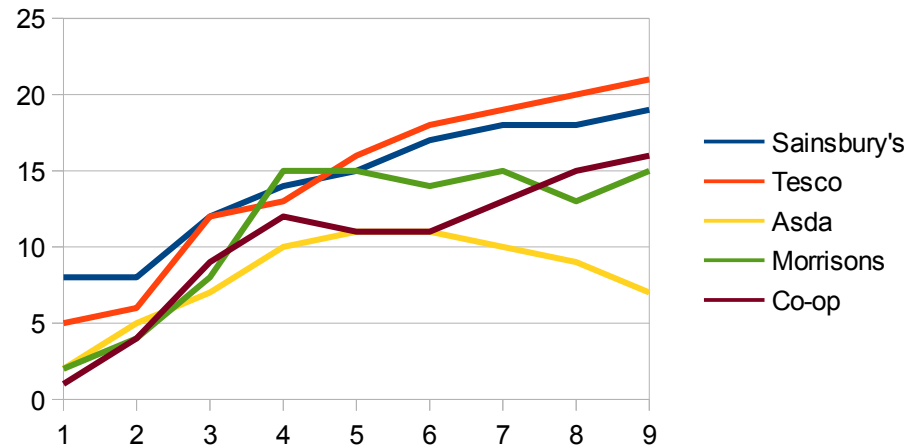
# 1. PLAN THE REPORT

My rough report plan:

- Main body paragraph 1: Sainsbury's and Tesco broadly similar, Tesco outperformed Sainsbury's, large spike in 2002.
- Main body paragraph 2: Asda and Morrison's grew, but not as much, levelled off around 2004, then grew steadily again. Co-op unique; climbed, stabilised, then sank.

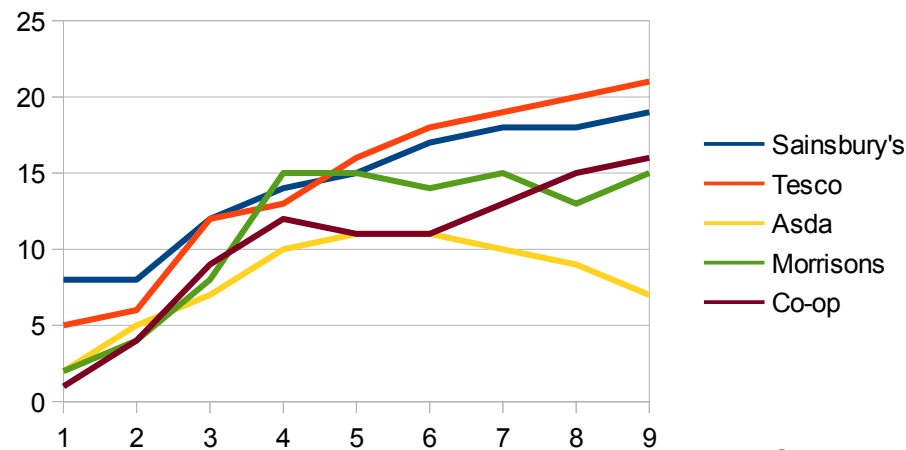
# 1. INTRODUCTIONS

- Use a sentence which describes the graph and the general idea.
- From the line graph it is clear that the majority of the UK supermarkets saw sales grow over the ten year period.



# 1. SUMMARY

- Explain the general idea of the graph (again!) but with a little more detail.
- Overall it is clear that Tesco and Sainsbury's increased sales the most, followed by Asda and Morrisons, the Co-op undoubtedly performed the worst.



# 1. PROCESS

- Step 1: Identify the information, group it, build your body paragraph 1 and 2, write a rough **plan**.
- Step 2: Write introduction (describe briefly what is the graph and the general idea).
- Step 3: Write body paragraphs (FOLLOW the **plan** written before).
- Step 4: Write summary, include the maximum and the minimums, and the exceptions.

# 5 TIPS

# **PART 2: WHAT YOU NEED TO DESCRIBE A LINE GRAPH**

# ACTIVE TO PASSIVE

Sales crashed to new levels

The sales rose quickly

Employment fell drastically



# ACTIVE TO PASSIVE

Sales crashed to new levels

There was a crash to new levels in sales

The sales rose quickly

There was a quick rise in the sales

Employment fell drastically

There was a drastic fall in employment

# PASSIVE TO ACTIVE

There was an incredible decrease in output

In 2010 there was a plunge in turnover

After the crisis there was a crash in profit

Last year there were two rises in annual income

# PASSIVE TO ACTIVE

There was an incredible decrease in output  
Output decreased incredibly

In 2010 there was a plunge in turnover  
Turnover plunged in 2010

After the crisis there was a crash in profit  
Profit crashed after the crisis

Last year there were two rises in annual income  
Annual income rose twice last year

# ADVERBS

It is clear the trend is downward...

It is evident that sales dropped in the first quarter...

It is surprising that sales rose after a steady decline...

# ADVERBS

It is clear the trend is downward...

Clearly the trend is downward...

It is evident that sales dropped in the first quarter...

Evidently sales in the first quarter dropped ..

It is surprising that sales rose after a steady decline...

\*Surprisingly sales rose after a steady decline...

\*USE WITH CAUTION (Don't place your opinion.)

# TIME EXPRESSIONS

# USEFUL VERBS

<b>plunge</b>	<b>stabilize</b>	<b>rocket</b>
<b>crash</b>	<b>remain stable</b>	<b>soar</b>
<b>tumble</b>	<b>remain constant</b>	<b>surge</b>
<b>sink</b>	<b>level off</b>	<b>leap</b>
<b>fall</b>		
<b>drop</b>	<b>fluctuate</b>	
<b>decline</b>		

# PHRASES TO USE FOR THE INTRODUCTION

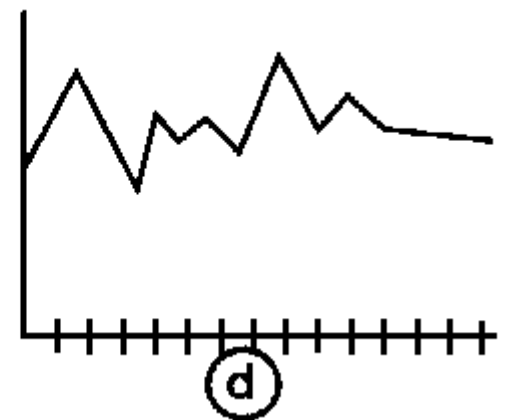
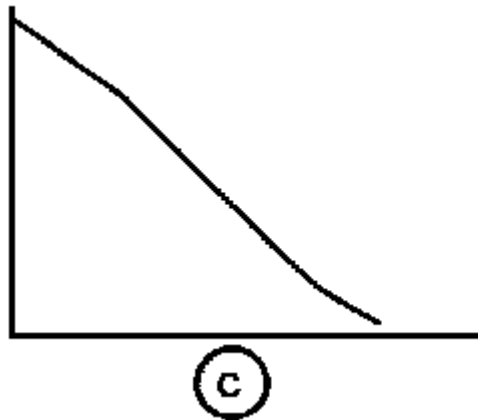
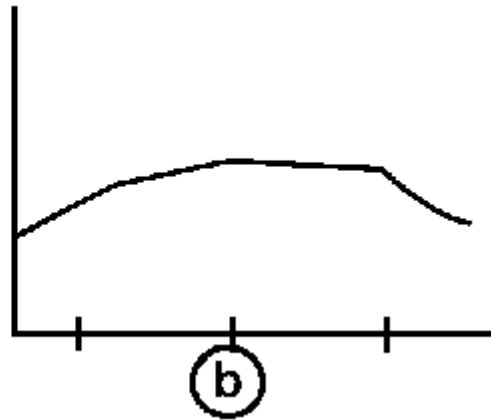
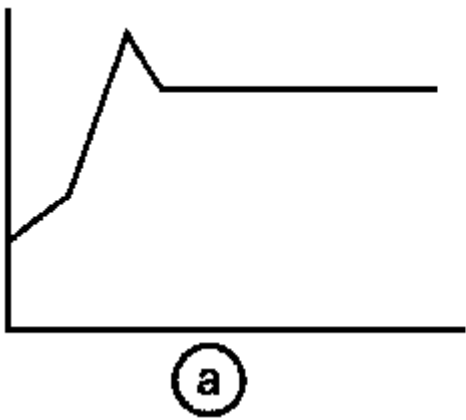


# PHRASES TO DESCRIBE CHANGE

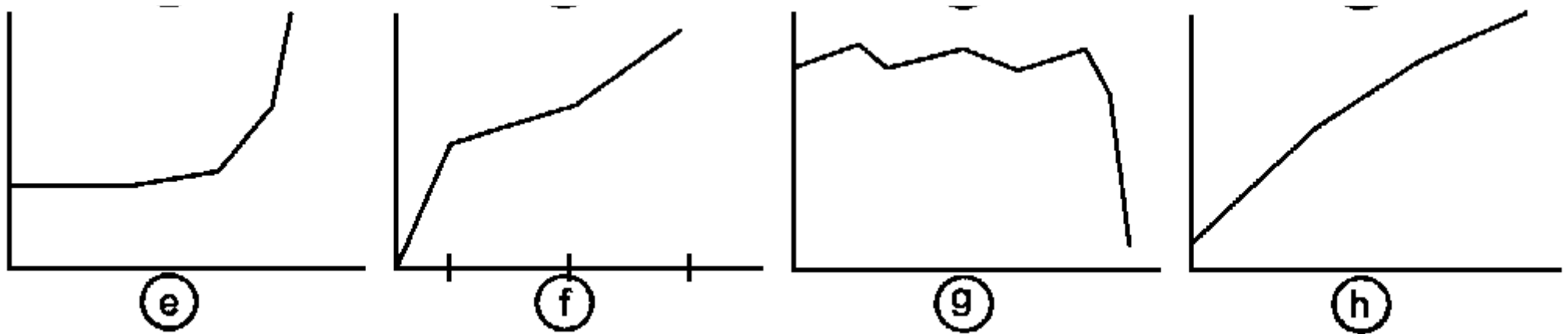
# EXERCISE

## DRAW LINE GRAPHS TO MATCH THE DESCRIPTIONS

# EXERCISE



# EXERCISE



# 5 ACTIONS TO INCREASE YOUR CHANCES OF PASSING THE IELTS EXAM

1. Sign up [HERE](#) for free weekly tutorials and awesome practical guides.



2. FILL Your phone up with FREE IELTS MP3s.



3. Subscribe to the Youtube Channel.



4. Subscribe to the Itunes podcast



5. Ask for help if you have a problem: [ieltspodcast-at-gmail.com](mailto:ieltspodcast-at-gmail.com)

**GO TO**  
**IELTSPodcast.COM**  
**AND SIGN UP TO**  
**RECEIVE WEEKLY TIPS**  
**AND HELP**